

S2-WL-ST

Solis Wi-Fi&LAN Data Logger

Models: S2-WL-ST (4 Pin) and S2-WL-ST (USB)

Description:

Up to 10 inverters can be connected to 1 data logger. The logger connects with the local router through Wi-Fi or LAN and transmits data to SolisCloud. SolisCloud, the Solis monitoring platform, allows for remote system monitoring and control. The data is clear and detailed, making it easy to monitor and troubleshoot from anywhere anytime.

Features:

- Supports WiFi and LAN communication
- Simple plug-and-play installation makes commissioning quick and easy
- Sends alarm notifications through text and email
- Support Bluetooth nearby connection and debugging
- One button for instant data transmission and device configuration
- Intuitive LED indicator lights displays the operating status

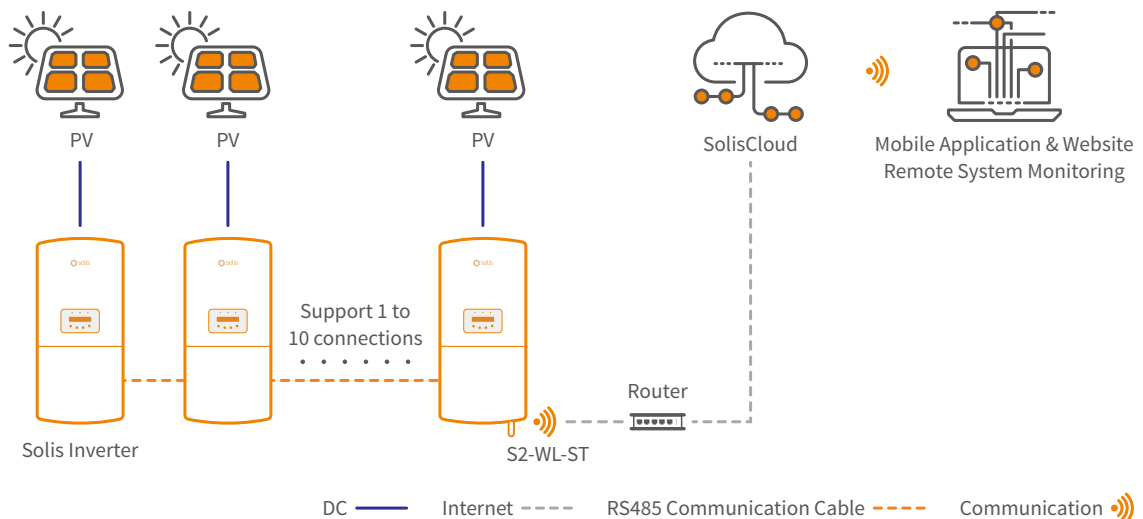


S2-WL-ST (4 Pin)



S2-WL-ST (USB)

Intelligent Monitoring Solution - S2-WL-ST



DATASHEET

S2-WL-ST

Models	S2-WL-ST (4 Pin)	S2-WL-ST (USB)
Communication		
Supported device type	All Solis models except for Solis S6 inverter	Solis S6 inverter
Number of connected inverters ⁽¹⁾	≤ 10	
Data collection intervals	5 minutes	
Status indicator	3 LED Indicator Lights	
Inverter connection interface	External 4-Pin Port	External USB Port
Ethernet communication	Number of routes × 1, 10 / 100 Mbps adaptive, communication distance ≤ 100 m	
Wireless communication	802.11b/g/n (2.4G) ⁽²⁾	
Near end communication	BLE4.2	
Configuration method	Mobile Application and Website	
Electrical		
Operating voltage	DC 5 V (+ / -5%)	
Operating power consumption	≤ 2 W	
Environment		
Operating ambient temperature range	-22°F to 149°F (-30 to 65°C)	
Operating humidity	5% - 95%, Relative humidity, non-condensing	
Storage temperature	-40°F to 158°F (-40 to 70°C)	
Storage humidity	< 40%	
Max. operation altitude	13,123 ft (4,000 m)	
Protection degree	NEMA 4X	
Mechanical		
Dimensions (L × W × H)	5.7 × 2 × 1.6 in (145 × 50 × 41 mm)	5.1 × 2 × 1.6 in (130 × 50 × 41 mm)
Installation method	Externally Insert + Twist Lock	Externally Insert + Tab Lock
Weight	0.22 lb (100 g)	0.2 lb (90 g)
Others		
Certification	CE, FCC	

(1) Inverters must first be daisy-chained with RS485.

(2) 5 GHz Wi-Fi networks are not supported.